



Talent Insights - May 2021

The latest on high-impact, high-quality coaching,
leadership acceleration, and career transition



Executive Employment Trends Report Q1 2021

Our quarterly report on executive employment trends is here! Download the report for our findings on landing times, compensation, and more! [Download Report >>](#)

VIDEOS: Journeys in Leadership Series: Episodes 6 & 7



Episode 6: Leadership in Extraordinary Times - Resilience & Triumph Over COVID-19: What does it mean to be a leader during “unprecedented times?” The global pandemic’s impact on business has led many leaders to re-examine their leadership styles to align more closely with the needs of their teams. **BPI group Executive Coach Simon Foster** shares how one of his clients developed his skills in three key areas to take his team from surviving to thriving.

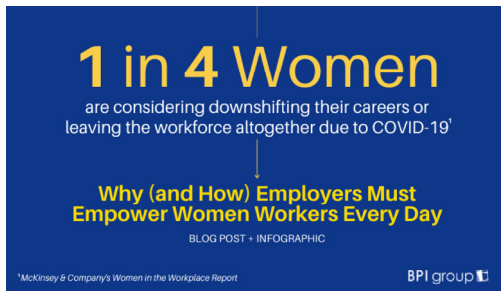
Journeys in Leadership, Episode 7 - Unlocking Your Potential: 3 Essential Qualities & Skills for Leaders to Cultivate: In the latest episode of our Journeys in Leadership series, **BPI group Executive Coach Richard Ellis** discusses three of the key qualities that leaders must cultivate to overcome the challenges of leading in a modern world: Adopting a purpose-driven approach to life, moving from traditional leadership to followership, and having the courage to take smart risks.



[Watch Videos >>](#)

Shifting Skills for a Shifting Workplace: Upskilling & Reskilling for Transitioning Workforces

First it was automation and the advancement of technology; now it's a global pandemic. While the change drivers continue to shift, the need for upskilling and reskilling today's workers has only grown in urgency and breadth. This is especially true for exiting employees. BPI group's Mark Rossi explains why and how employers can support skills development in transitioning workforces. [Read Article >>](#)



Women in the Workplace: Empowering Them Every Day

After a troubling year for women workers, the McKinsey & Company's Women in the Workplace report reveals that 1 in 4 women are considering downshifting their careers or leaving the workforce altogether due to COVID-19. We've compiled 40 ways employers can empower women in the

workplace today and every day. [Read Article + Infographic >>](#)

Launching a New Leader – New Leader Assimilation Case Study

New leader assimilation is a critical step in aligning a new leader with his or her team. It helps the leader gain full situational awareness, develop camaraderie, and build trust with their new team. Learn how one organization did it the "right" way.

[View Case Study >>](#)



What Our Clients are Saying About Us

"The best qualities in my coach were her ability to listen, understand, and fearlessly deliver tough messages in a compelling yet compassionate way. Her coaching always hit the mark and made me a better leader."

**Former Senior Director, U.S. Talent Management,
Global Quick Service Restaurant Company**



CONNECT WITH US

Copyright © 2021, All rights reserved.

Our mailing address is:

BPI group
181 W. Madison St.
Suite 3700
Chicago, IL 60602